



A worldwide presence



“ Secure lifting and lashing with **STANDARDISED** ”
AND APPROVED PROFESSIONAL EQUIPMENT

SELECTION

Special Agricultural

SOMMAIRE

— INFORMATIONS - P 03

- Un point RSE p.03
- Nouveauté produit..... p.04

— ARRIMAGE - P 05

- Système d'arrimage - 50 MM p.06
- Système d'arrimage - 50 mm ERGOTRUCK®... p.06
- Système d'arrimage - 25 MM p.06
- Système d'arrimage - 35 MM p.07
- Cornières de protection p.07
- Arrimage porte véhicules p.07
- Arrimage auto-rétractable p.08
- Tendeur à cliquet pour chaîne p.08
- Chaîne d'arrimage p.08

— DÉGAGEMENT / REMORQUAGE - P 07

- Élingue de remorquage p.09
- Snowcramp XXL p.10

— PROTECTION - P 11

- Protection des fourches avec le polyuréthane .. p.12
 - Coins en polyuréthane p.12
 - Tapis anti-glisse p.12
-



— LIFTING - P 13

Standard round slings p.14
Flat webbing slings p.14
Hammock webbing slings p.15
Pipe laying flat webbing slings p.15
Cable slings p.16
Chain slings p.17
Manual chain hoist p.18
Tri-hook nozzle lifters p.18

— FORESTRY WORK - P 19

Skidding slings..... p.20

— HANDLING - P 21

Clamps for handling steel drums p.22
Wire rope grab..... p.22
Jacks p.23
Accessories p.23

— LARGE ANIMAL RESCUE SYSTEM - P 24

• Anisecours p.24







- ◆ SmartLink® is an innovative device, integrated directly into the seam of the sling, under the label. This system ensures that the sling is held securely when folded. Thanks to this integral elastic band, disposable and unnecessary packaging is a thing of the past: one more gesture for the planet. By remaining attached to the sling, the elastic prevents any loss and makes storage quick, easy and tidy after use.

0 packaging :
0 plastic,
0 cardboard,
0 paper.

Currently exclusive to our ALP®, the SmartLink® system embodies our commitment to sustainability and performance. In line with our CSR policy, this innovation will gradually be rolled out across our entire textile lifting range. Come and discover this new system, on the dedicated page of our website.



NEW PRODUCT

ALP

PMS Industrie is proud to unveil an innovation never before seen on the market: a range of round lifting slings available from 1 to 10 tonnes. Designed to combine performance and aesthetics, each sling features an elegant herringbone pattern.



- A herringbone weave gives the sling extra thickness.
- A water-repellent treatment to protect the sheath and ensure greater longevity, even in the most demanding conditions.
- A sewn-on, plated label to ensure a better fit.
- The first range to feature the SmartLink® system.



Discover a new dimension of reliability and efficiency with our range of round slings, designed to surpass current market standards.

LASHING



Lashing system webbing width 50 MM

Compliant with standard: EN 12 195-2



- ◆ Webbing width: 50 mm.
- LC : 4,000 daN.
- LC : 2,000 daN.
- STF : 400 daN.
- Breaking strength of the webbing only : 6 t.



BASE OF REF. 5D0



BASE OF REF. 5D22



BASE OF REF. 5D11



Lengths
available:
9m, 10m, 12m,
15m, 20m

Lashing system 50 mm strap width ERGOTRUCK®

Compliant with standard: EN 12 195-2



- ◆ Ergonomic reverse turnbuckle with large handle.
- Webbing width: 50 mm.
- LC : 5,000 daN.
- LC: 2,500 daN.
- STF: 400 daN.
- Breaking strength of the webbing only : 6 t.
- Standard system length : 9 m.



REF. 6EG22 900 30 VE ERGOT



REF. 6EG11 900 30 VE ERGOT



Lashing tensioner
standard ratchet



Lashing tensioner
Ergonomic : no strain
on the back.

Lashing system WEBBING WIDTH 25 MM WIDE

Compliant with standard: EN 12 195-2



- ◆ Ratchet tensioner.
- Webbing width: 25 mm.
- LC : 800 daN.
- LC : 400 daN.
- STF : 40 daN.
- Breaking strength of the webbing
only : 1.2 t.



Lengths
available:
9m, 10m, 12m,
15m, 20m



BASE OF REF. 2B0




BASE OF REF. 2B11

STF: Standardised tension force.
SHF: Standardised manual force.
TMU: Maximum working voltage
LC: Lashing capacity

Lashing system 35 MM WEBBING WIDTH

Compliant with standard: EN 12 195-2



- ◆ Webbing width: 35 mm.
LC  : 2 000 daN.
LC : 1 000 daN.
STF : 250 daN.
Breaking strength of the webbing
only : 3.2 t.



Lengths
available:
9m, 10m, 12m,
15m, 20m



BASE OF REF. 3B0



BASE OF REF. 3B11



BASE OF REF. 3B22

CORNER protectors



- ◆ The angle brackets minimise friction and wear
of the straps.
They help keep loads in place by providing a more
stable structure, reducing the risk of shifting during
transport.
Length: 2.40 m.

REF. COLG 240 N

Lashing VEHICLE CARRIER

Compliant with standard: EN 12 195-2

- ◆ Ensure the stability of your vehicles in transit
with specially designed straps.



RÉF. 86C222 300 OR VDI 81





Other models are available. Please
contact us for more information.

Lashing SELF-RETRACTING

Compliant with standard: EN 12 195-2



- ◆ Webbing width: 25 mm
Breaking strength of the webbing only : 0.9 t*.
LC  : 600 daN - LC  : 300 daN
Standard system length : 3 m.





REF. SYA-RETRAC-25-1202-3M



REF. SYA-RETRAC-25-1002-3M

2-piece pack

- ◆ Webbing width: 50 mm
Breaking strength of the webbing only 2,25 t*
LC  : 1 500 daN
LC  : 750 daN
Standard system length : 5 m.



REF. SYA-RETRAC-50-1006-3M



REF. SYA-RETRAC-50-S-3M



REF. SYA-RETRAC-50-1826-3M25

Lashing tensioner FOR CHAIN

Compliant with standard: EN 12 195-3

- ◆ Hook with safety catch.
Engraved serial number.
For 10 mm diameter chain.
LC 63 kN.



REF. ACTAC/R10



Available in
diameters
6, 8, 13 and 16.

LASHING CHAIN

Compliant with standard: EN 12 195-3

- ◆ Latch hook.
Shortener.
Diameter : 10 mm.
Length : 3,50 m.
LC 63 KN.



REF. CHTAC01 10 3.5



Other combinations
and lengths available.

CLEARING / TOWING



Sling for TOWING

- ◆ Ideal for vehicle clearance.
Not approved for road use.
Usable length 4 m.
Capacity 20 tonnes.



Available in 6 m.



REF. EREM 20 4

SNOWCRAMP XXL

THE CHAIN OF MOVE
ALL TERRAIN



- ◆ The Snowcramp XXL is a versatile chain designed to cope with the most demanding weather conditions. This device offers dual functionality: it can be used both as a release system, guaranteeing optimum grip on snow, mud or black ice, and as a removable anti-skid in deep snow.



Compatibility with the Loi Montagne

Law to be applied in France depending on the geographical area.



More information
on the law

Caractéristiques Techniques



Twisted links :
grips slippery surfaces
(snow, mud, black ice).



Rim protection: polyurethane
support protects the rims and
tensioner against rubbing.



PVC sleeve on the webbing :
prevents rubbing or wear
against the rim.

Packaging

Bag of 3 elements: durability and respect for the environment.

Assembly instructions printed directly on the back.

Available in boxes on pallets: 16 bags.

REF. 1 ÉLÉMENT : SNOWXXL

REF. 1 SAC DE 3 ÉLÉMENTS : SNOWXXL SAC



PROTECTION



FORK PROTECTION WITH POLYURETHANE

- ◆ Ideal for protecting big-bag webbing and preventing loads from cutting or tearing. Improves grip on forks.

REF.PFPU



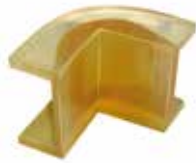
POLYURETHANE CORNERS

- ◆ For flat webbing and lashing systems. Webbing passage 70 to 335 mm



REF.CPUF
REF. CPUFA (with magnet)

- ◆ With tongue.



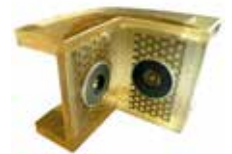
REF.CPU
REF. CPUA (with magnet)

- ◆ Without tongue.



REF. CPUFX
REF. CPUFXA (with magnet)

- ◆ With tongue and flexible angle.



OPTION
WITH MAGNETS

- ◆ For better hold on metal surfaces.

NON-SLIP MATS

- ◆ The anti-slip mat is an essential accessory for ensuring safety and stability during transport. Designed to prevent loads from slipping, it offers superior grip, reducing the risk of accidents and unforeseen movements. It also provides acoustic comfort for the driver by absorbing vibrations.

5-metre roll.
Thickness 4 or 8 mm

REF.TAPIS ANTI-G



LIFTING



ROUND SLING STANDARD

Conforme à la norme : EN 12 195-2 + A1



- ◆ Safety factory 1:7.

From 0.5t to 10t and from 0.4m to 40m.

100% high tenacity multifilament polyester.

Individual traceability number for each sling.

Instructions for use and certificate of conformity can be downloaded using the QR code label.



1 t 3 m
RÉF. ER 1 3

1 t 4 m
RÉF. ER 1 4



2 t 3 m
RÉF. ER 2 3

2 t 4 m
RÉF. ER 2 4



3 t 3 m
RÉF. ER 3 3

3 t 4 m
RÉF. ER 3 4



5 t 4 m
RÉF. ER 5 4

5 t 5 m
RÉF. ER 5 5



Selection of the most frequently used references.

SANGLE PLATE TYPE B, 2 BANDES PORTEUSES

Conforme à la norme : EN 12 195-1 + A1



- ◆ Safety factory 1:7.

From 0.5t to 20t and from 0.4m to 100 m.

100% high tenacity multifilament polyester.

Folded buckles with standard textile reinforcement.

Individual traceability number for each webbing.

Instructions for use and certificate of conformity can be downloaded via a QR code on the label.

Selection of the most frequently used references.



- 2 ou 3 m
- CMU : 2000 kg
- Width of webbing : 30 mm

RÉF. B30 2 2
RÉF. B30 2 3



- 2 ou 3 m
- CMU : 2000 kg
- Width of webbing : 60 mm

RÉF. B60 2 2
RÉF. B60 2 3



- 3 ou 4 m
- CMU : 3000 kg
- Width of webbing : 90 mm

RÉF. B90 2 3
RÉF. B90 2 4



- 3 ou 4 m
- CMU : 3000 kg
- Width of webbing : 120 mm

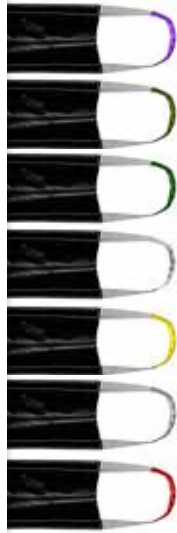
RÉF. B120 2 3
RÉF. B120 2 4



These slings can be requested with steel buckles.



HAMMOCK SLING



- ◆ Ideal for handling heavy, compact objects. Its hammock shape distributes pressure evenly and provides better load support.

REF. SLDH 30 {LENGTH} {WIDTH} – CMU 1 t
REF. SLDH 50 {LENGTH} {WIDTH} – CMU 1,5 t
REF. SLDH 60 {LENGTH} {WIDTH} – CMU 2 t
REF. SLDH 75 {LENGTH} {WIDTH} – CMU 2,5 t

REF. SLDH 90 {LENGTH} {WIDTH} – CMU 3 t
REF. SLDH 120 {LENGTH} {WIDTH} – CMU 4 t
REF. SLDH 150 {LENGTH} {WIDTH} – CMU 5 t

WEBBING SLING FLAT HOSE REST



- Webbing width : 60 mm
 - CMU 1,6 t (in a noose)
- REF. ST 60 {LENGTH}
- Webbing width : 75 mm
 - CMU 2 t (in a noose)
- REF. ST 75 {LENGTH}

- ◆ Choke lift with sliding hook: prevents the hose from swivelling and ensures stability. The wide, flat webbing provides excellent stabilisation, preventing the hose from slipping sideways. The webbing is designed to pass under the hook, avoiding any direct contact between the hook and the hose, thus preserving the integrity of the latter.



WIRE SLING

Conforme à la norme EN 13414-1+A2



Simple loop with aluminium ferrule wire sling



- Useful length : 2 m
- CMU : 1550 kg
- ø rope : 12 mm

REF. ECA001 12 2

- Useful length : 2 m
- CMU : 2120 kg
- ø rope : 14 mm

REF. ECA001 14 2

- Useful length : 2 m
- CMU : 3300 kg
- ø rope : 16 mm

REF. ECA001 16 3

Eyes fitted with thimble and aluminium ferrule wire sling



- Useful length : 2 m
- CMU : 1550 kg
- ø rope : 12 mm

REF. ECA002 12 2

- Useful length : 2 m
- CMU : 2120 kg
- ø rope : 14 mm

REF. ECA002 14 2

- Useful length : 2 m
- CMU : 3300 kg
- ø rope : 16 mm

REF. ECA002 16 3

Multi-legs slings

- ◆ From 1 to 4 strands.
- Grade 80
- ø 6 to 20 mm.
- Self-locking hook.
- Safety factor: 1:4.



Other lengths, combinations and capacities available.
Available in grade 100.



- Longueur utile : 2 m
- CMU : 1550 kg
- ø chaîne : 12 mm

REF. ECA102Z 12 U2



- Longueur utile : 2 m
- CMU : 2120 kg
- ø chaîne : 12 mm

REF. ECA202Z 12 U2



- Longueur utile : 2 m
- CMU : 3300 kg
- ø chaîne : 12 mm

REF. ECA302Z 12 U2



- Longueur utile : 2 m
- CMU : 3300 kg
- ø chaîne : 12 mm

REF. ECA402Z 12 U2

CHAIN SLING

Conforme à la norme EN818-4+A1.

- ◆ From 1 to 4 strands.
Grade 80
ø 6 to 20 mm.
Safety factor : 1:4.



A chain sling is made up of metal links and fittings to link it to the load to be lifted. It is renowned for its value for money and its high resistance to cutting and abrasion. Shortening claws can be added to adjust the length of the strands for maximum versatility.



- Useful length : 2 m
- CMU : 3150 kg
- ø chain : 10 mm

REF. ECH104Z 10 U2



- Useful length : 3 m
- CMU : 2800 kg
- ø chain : 8 mm

REF. ECH204Z 08 U3



- Useful length : 3 m
- CMU : 4250 kg
- ø chain : 8 mm

REF. ECH304Z 08 U3



- Useful length : 3 m
- CMU : 4250 kg
- ø chain : 8 mm

REF. ECH304Z 08 U3



MANUAL HOIST

Conforme à la norme EN 13157+A1.

The manual hoist can be attached to a trolley for use as a mobile chain hoist, or combined with a monorail overhead conveyor system, a mobile hoist and a jib crane. Our hoists are suitable for use in the installation of equipment, as well as for loading or unloading goods.

- Chain length 2,5 m.
- Capacity 1000 kg.

REF. AAPMC PMS 10 2.5



- Chain length 1,5 m.
- Capacity 750 kg.

REF. AAPML PMS 7.5 -1.5



CONCRETE CULVERTS AND MANHOLE CLAMP

Mainly used to handle nozzles, concrete pipes or heavy cylindrical parts. This equipment is designed to lift these items securely using three hooks that hook around the nozzle or pipe. Manufactured to prevent unintentional dismantling. Consists of 3 self-closing clamps.

- Chain length 2.5 m.
- Capacity 1500 kg.
- Spacing: 40 to 120 mm.
- For pipes with internal diameter of 0.4 to 2.2 m.

REF. AALBTC 15



TRAVAUX FORESTIER



Our skidding slings are designed to meet the most stringent requirements of the forestry industry. They are effective for skidding logs safely and efficiently. They offer exceptional resistance to heavy loads, while ensuring safe handling.

SKIDDING CABLE SLING WITH CHOKER



Other capacities and lengths available

- ◆ 1 spliced buckle.
- ◆ 1 die-cut steel end cap.
- ◆ 1 small choker.
- ◆ Length 3 m.
- ◆ Cable diameter 15 mm.

REF. ECA007A 15 3



- ◆ 2 die-cast steel end caps.
- ◆ 1 small choker.
- ◆ Length 2.5 m.
- ◆ Cable diameter 14 mm.

REF. ECA009B 14 2.5



SKIDDING CABLE SLING WITH SLIDING HOOK



Other capacities and lengths available

- ◆ 1 strand.
- ◆ 2 forged steel end caps.
- ◆ 1 bare loop.
- ◆ 1 thimbled buckle with aluminium sleeve.
- ◆ 1 sliding latch hook.
- ◆ Length 3 m.
- ◆ Cable diameter 16 mm.
- ◆ CMU 2000 kg.

REF. ECA011 16 3



HANDLING



STEEL DRUM LIFTING CLAMP

- ◆ Lifting and moving metal drums without damaging them or risking overturning them.
Easy handling.
Minimised physical effort.

Horizontal lifting



- ◆ CMU on 2 strands: 1 000 kg
Chain length: 500 mm
RÉF. AAPFLHA1

Vertical lifting



- ◆ CMU : 600 kg
Opening : 0 - 30 mm
RÉF. AAPFLVB1



- ◆ CMU : 500 kg
ø barrel : 550 - 600 mm
RÉF. AAPFLVC1

WIRE ROOP WINCH

- ◆ Lightweight and compact, it is designed for pulling and lifting loads and can work in any position.

- Cable length 20 m.
- Rope diameter 11 mm.
- Capacity 1600 kg.

RÉF. AAACP10 SL16 20



With or without cable. Other capacities available.

LES CRICS

Cric à fût montant



- ◆ Capacity: 1,500 to 10,000 kg
- Lifting height: 300 mm

RÉF. CFM

Cric à fût hydraulique



- ◆ Capacity: 5,000 to 25,000 kg
- Lifting height: 300 mm

RÉF. CHY

ACCESSORIES

Conforme à la norme EN 13414-1 et 3.

Lyre manila

- Galvanised steel

⚠ Do not use for lifting.



- CMU : 300 kg
- RÉF. ACMLY/10

- CMU : 500 kg
- RÉF. ACMLY/12



Manille droite

- Galvanised steel

⚠ Do not use for lifting.

- CMU : 1000 kg
- RÉF. ACMD/16

- CMU : 1600 kg
- RÉF. ACMD/20

- CMU : 2000 kg
- RÉF. ACMD/22

Connecting mesh

- Grade 80
- Safety factor 1:44



- CMU : 2000 kg
- RÉF. ACMAJ2/7-8

- CMU : 3150 kg
- RÉF. ACMAJ2/10



Cable clamp

- Cast iron clamp
- ø cable : 5 mm

⚠ Do not use for lifting.

RÉF. ACSCE01/05

Hook

- Clevis lock
- Grade 80
- Safety factor 1:4



- CMU : 2000 kg
- RÉF. ACCVC2/01

- CMU : 3150 kg
- RÉF. ACCVC2/02



Heart pod

- Small opening for cable for cable

- ø câble : 4 mm
- RÉF. ACCCPO/04

- ø câble : 6 mm
- RÉF. ACCCPO/06

RESCUE OF LARGE ANIMALS

UNTIL
3T



ANISECOURS
By PMS INDUSTRIE

Adaptability

Intermediate buckles allow adjustment to different animal sizes up to 3 tonnes, such as cattle and equines.

Ease of use

This system has proved its effectiveness over the years. Designed to be practical, adaptable and safe, it has proved its worth in critical moments and continues to evolve to meet the demands of emergency interventions.

Animal safety

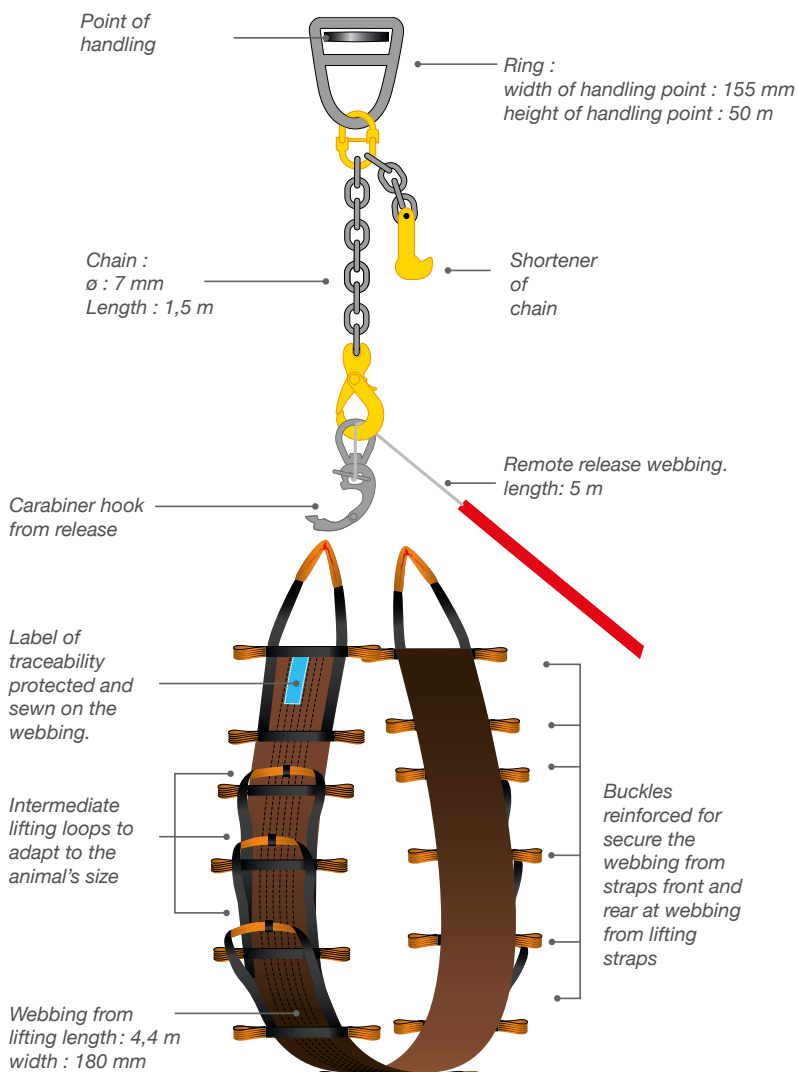
Designed with animal safety in mind, a Velcro system secures unused buckles. Only the textile part touches the animal, while the steel remains suspended to prevent injury. Wide webbing ensures safe and respectful lifting.

Operator safety

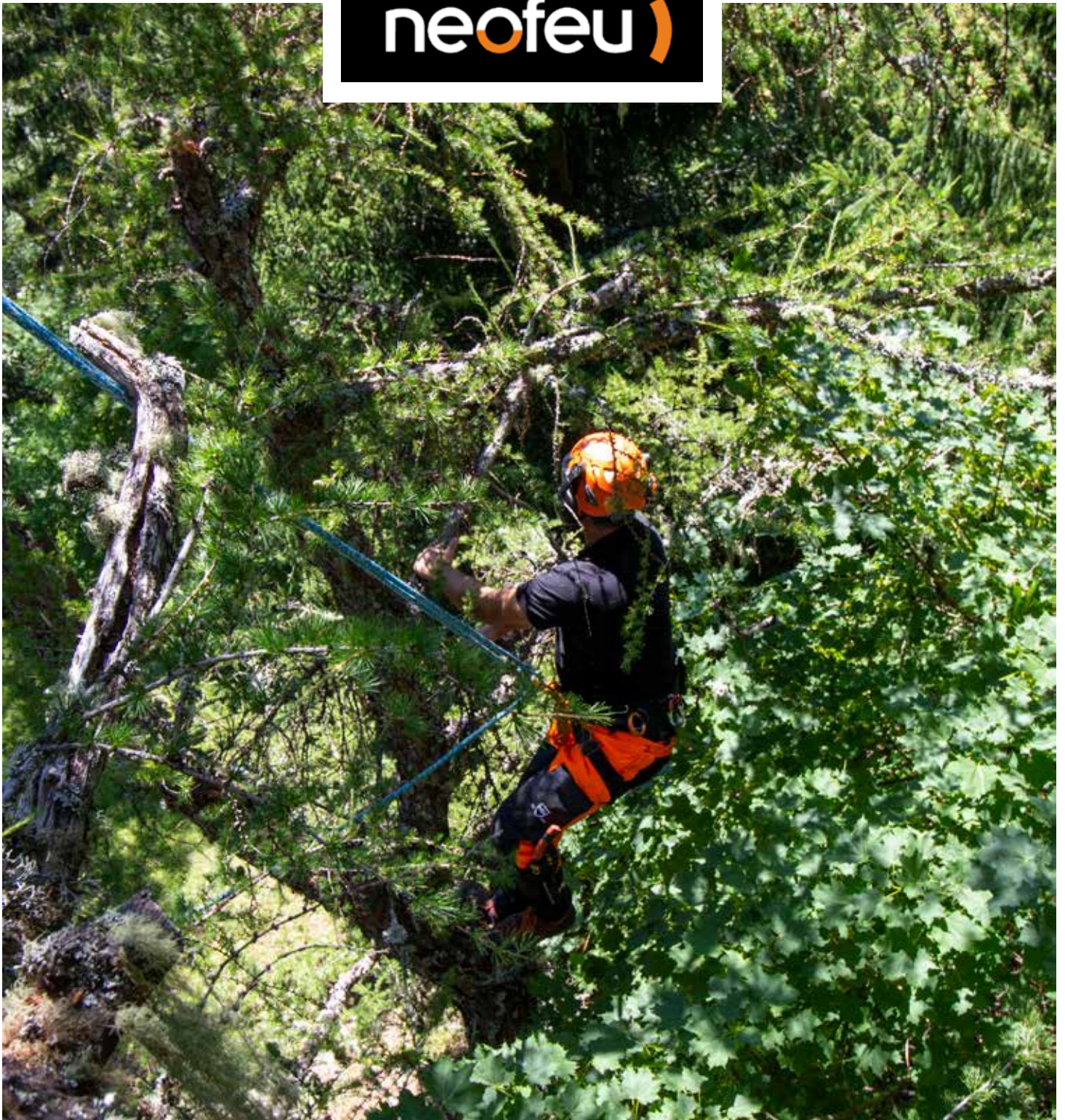
The system incorporates remote release webbing, enabling the animal to be released quickly in an emergency. Webbing at the front and rear of the device also ensures a stable and balanced hold during lifting manoeuvres, reducing the risk to the animal and its rescuers.

Design

The new black, brown and orange colours give ANISECOURS a more modern design, while making it less messy.



The model shown here is an older version and does not show the latest updates.
Photo credit: Kevin Laisné - Sdis95.



**FOR YOUR OWN SAFETY,
THINK ABOUT PERSONAL PROTECTIVE EQUIPMENT,
AND DEVICES TO PREVENT LOADS FROM FALLING.**

neofeu.com

a subsidiary of the PMS Group

your contacts

Support, advice, technical information, user manuals - our customer service team will help you use the entire PMS Industrie range.

This service, based in France, is available Monday to Friday from 8 a.m. to 6 p.m.:

- By telephone: 03 81 96 33 34
- By email: export@pms-ind.com

our catalogue



www.pms-ind.com

follow us



Your distributor



8 route des Planches - 25250 RANG
03 81 96 33 34 - www.pms-ind.com



Opérateur économique agréé



Qui sommes-nous ?
Flashez pour voir notre vidéo de présentation.

